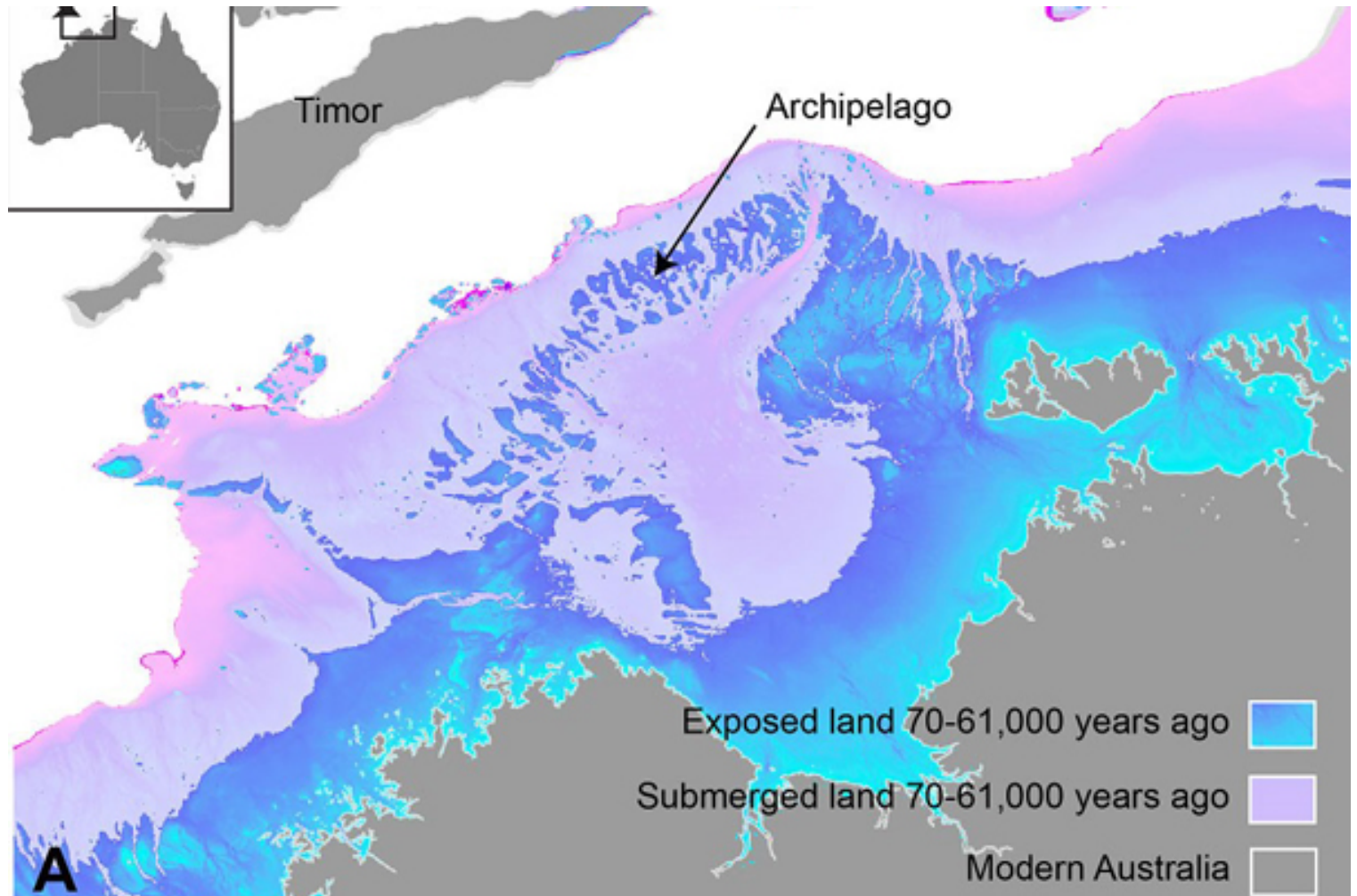


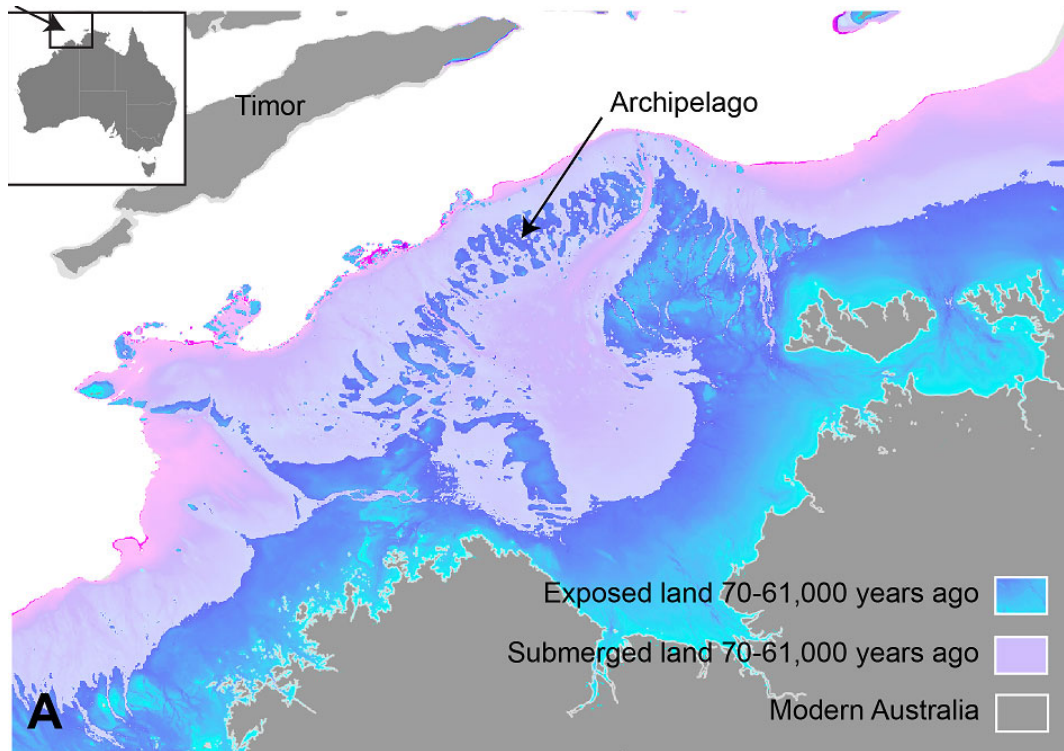
## Sahul

By IAS Toppers | 2024-05-16 16:20:00



## Sahul

Archaeologists have recently discovered evidence of a **lost landscape** known as **Sahul**, which was a **supercontinent** exposed during the **last ice age** due to glaciation that lowered the **global sea levels**.



[ref-sun.com]

### **About Sahul:**

- **Sahul** was connected to **Australia, Papua New Guinea, Tasmania**, and neighboring islands such as **Aru**.
- It was above sea level about **70,000 years ago** and facilitated human migration across continents, specifically from **Asia to Australia**.